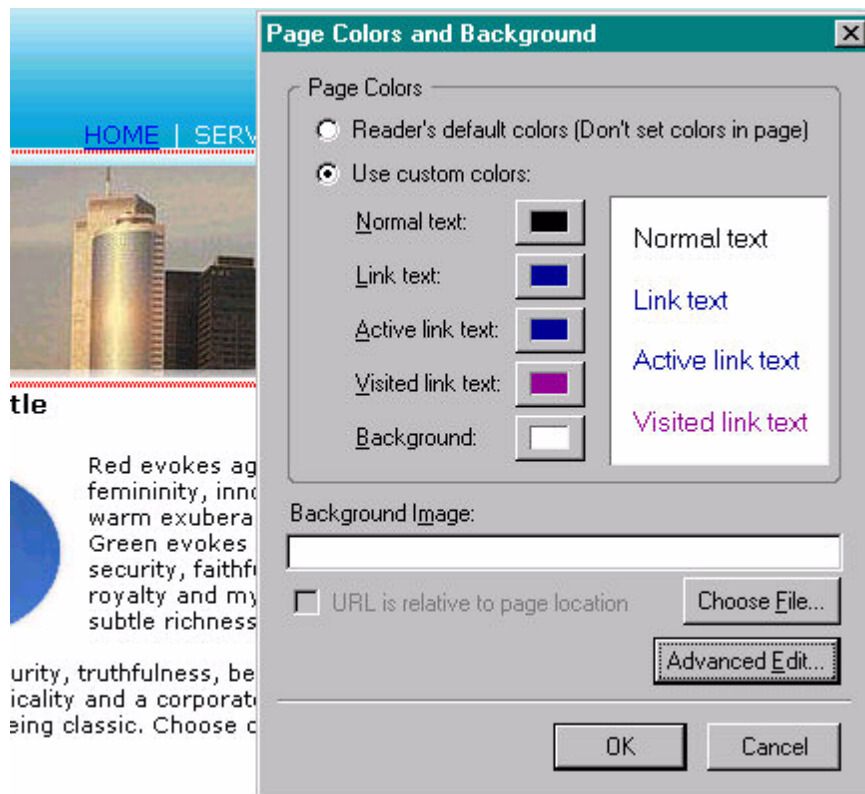


After you have downloaded the template and opened it in **Nvu** the first thing you will notice is that it has a place for links along the top with the text already typed in. If you highlight “HOME” with your mouse and click the icon on the toolbar for “Link” which invokes the link manager, you can type in “index.html” and then click OK.

If you preview the template in your browser, you will see that the link is now a blue color. It is hard to read against the lighter blue background. This means we need to change the color of the link. There is a couple of way we could do this.

Assuming we would like to keep the colors of the links white, from the file menu along the top of the program window choose “Format” and then from the context menu that opens scroll to the bottom and click “Page Colors and Background.”

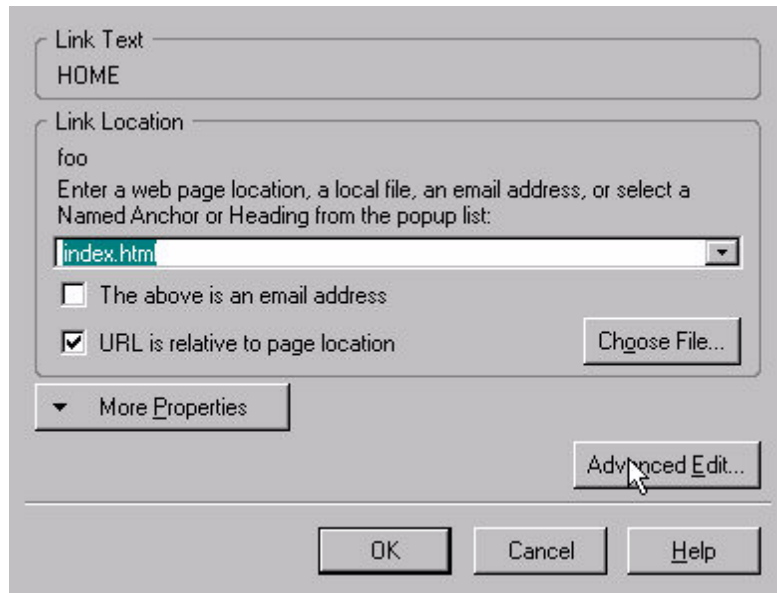
You should see a window that looks like this when you make the above choice:
Figure 4-1



On some templates you will find yourself working on, this may be the place to make the change, but using this tool will affect the color of **all** the links in the template. Now imagine... in the other parts, of the document below, where we have a white background, a white link is going to be invisible, so no one will be able to see it. This would not be satisfactory at all. Then what we need to do is just change the color of the links at the top of the template. To do this, we need to use “*inline style.*”

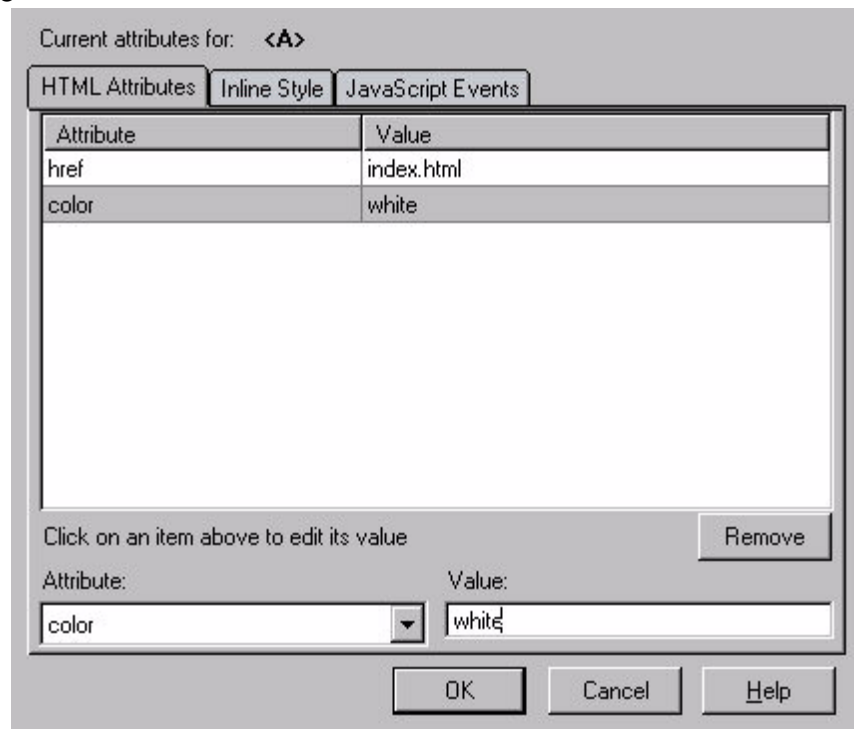
So, if you double-click on the link “HOME” again, then you will need to click on the button that says “Advanced Edit” as show below:

Figure 4-2



From the window that appears you will see three tabs at the top. Click on “Inline Style” and put these values in there:

Figure 4-3



Once you have done this, click “OK” and then click “OK” in the other window that is still open. Then when you preview it in your browser, you will see that the top link(s) are still white, and the default colors for the links, will still appear in the body of the document as the blue color that they should be.